

ELEVATING COMMUNITY BETTERMENT UNITING HUMANITY, NATURE AND ARCHITECTURE

GRI102-44

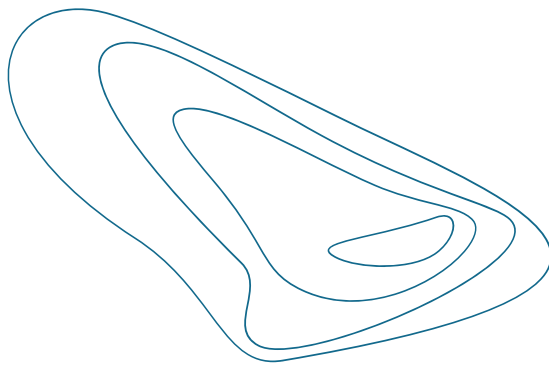
SUPPORTING THE UNSDGS



We are committed to enhancing connections in our community and providing high quality public buildings and facilities

We are dedicated to creating a sustainable city, by providing the community with safe, inclusive and green public spaces

We strive to incorporate social considerations into our projects, to create a harmonious and inclusive living environment



With a dense urban environment, accessible and quality public spaces are highly valued in Hong Kong. ArchSD is committed to creating inclusive public spaces and providing venues for activities that connect community members from diverse backgrounds.

We strive to promote social interaction and symbiosis between humans and nature. Our goal is to enable visitors to enjoy their leisure time by providing a respite from the fast pace of city life.

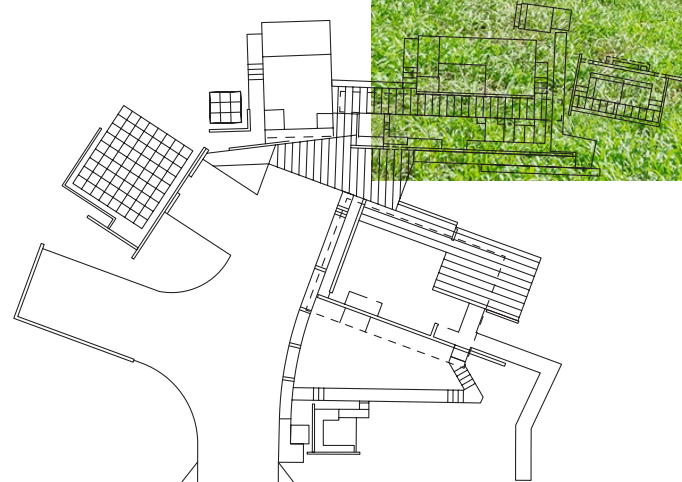
PROJECTS WITH
COMMUNITY-FRIENDLY FEATURES

CASE STUDY

HOI HA VISITOR CENTRE



A rural settlement in the manner of an old traditional village with individual buildings that are organically related to the surrounding landscape



|| IDEAL PLACES FOR LEISURE BEFORE REACHING THE WATERFRONT ||

LOCATED IN THE FASCINATING COUNTRYSIDE OF SAI KUNG, THE CENTRE CONNECTS VISITORS TO THE HOI HA WAN MARINE PARK TO EXPLORE A SCENIC SEA AREA WITH DIVERSE MARINE LIVES IN HONG KONG.

This is the first visitor centre for marine park in Hong Kong. The idea of the Centre is to create a rural settlement of an old traditional village with individual buildings that are organically related to the surrounding landscape. It serves to introduce the Marine Park to visitors before they proceed to the waterfront via the trail.

It embraces lawns with trees for gathering of visitors, serving as ideal places for leisure before reaching the waterfront. It aims to provide visitors with a plateau for outdoor gathering and a place of mediation between architecture and nature. The multi-purpose room, designed as a glass pavilion facing the heart of the village, related directly to the lawn as a form of continuity between inside and outside. This small-town like atmosphere with different varieties of veranda and small courtyard spaces, closely knitted together to form a comprehensive character of a locus that reinterprets the idea of old traditional village in a new manner.

Situated in the country park, the project ties together sustainable measures to reduce impact to the nature, while demonstrate to visitors on the related building technologies. Solar panels and photovoltaic bollards are installed to compensate electricity consumption. Rainwater is collected for recycling use through collection system and all wastewater generated in the centre is treated in-situ through a biological way.

CASE STUDY
-
HOI HA VISITOR CENTRE



Multi-purpose room as integration of indoor and outdoor /
place of leisure between buildings and nature

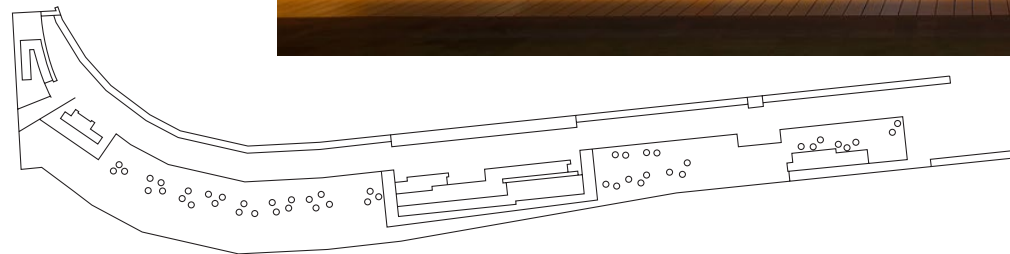


A plateau for outdoor gathering

PROJECTS WITH COMMUNITY-FRIENDLY FEATURES

CASE STUDY

NEW PROMENADE NEAR WAN CHAI FERRY PIER



Glass balustrade to bring public closer to the sea and the Kowloon cityscape beyond

|| AN ACCESSIBLE AND ENJOYABLE RECREATIONAL SPACE OPEN TO THE PUBLIC ||

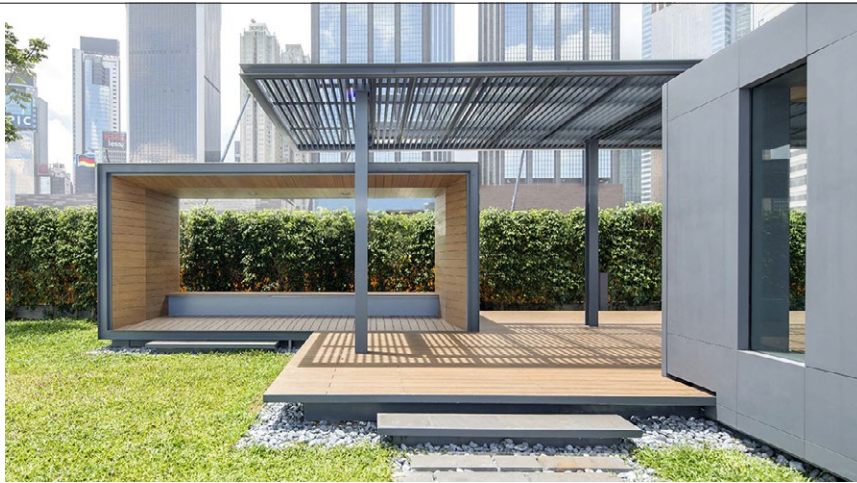
THIS NEWLY OPEN PROMENADE HAS ALREADY ATTRACTED TENS OF THOUSANDS OF VISITORS. IT CONNECTS WAN CHAI NORTH TO SHEK TONG TSUI AND FORMS THE LONGEST PROMENADE ALONGSIDE VICTORIA HARBOUR.

With an aim to bridge the public to the Victoria Harbour, glass balustrades were adopted to offer a magnificent view of the water. Picture-frame pavilions were strategically located by the Harbour, bringing the public closer to the Harbour and the magnificent Kowloon cityscape. The promenade is also lined with trees to offer ample shade, which is crucial at the promenade in Hong Kong particularly during hot and humid summer.

Citizens can enjoy diversified activities at this promenade, ranging from jogging, sunbathing, resting under sheltered seating to photo-shooting. The promenade is also a pet-friendly spot where pets on leashes are welcome to visit.

People from all walks of life are able to enjoy the new promenade round the clock. The waterfront has been successfully transformed into a vibrant and attractive public space, enhancing the quality of life and giving a unique landmark for the neighbourhood.

CASE STUDY
-
NEW PROMENADE NEAR WAN CHAI FERRY PIER



Picture-frame pavilions offering alternative perspectives towards Victoria Harbour



Picture-frame pavilions offering alternative perspectives towards Victoria Harbour



Picture-frame pavilions offering alternative perspectives towards Victoria Harbour



Glass balustrade to bring public closer to the sea and the Kowloon cityscape beyond

CASE STUDY
—
NEW PROMENADE NEAR WAN CHAI FERRY PIER

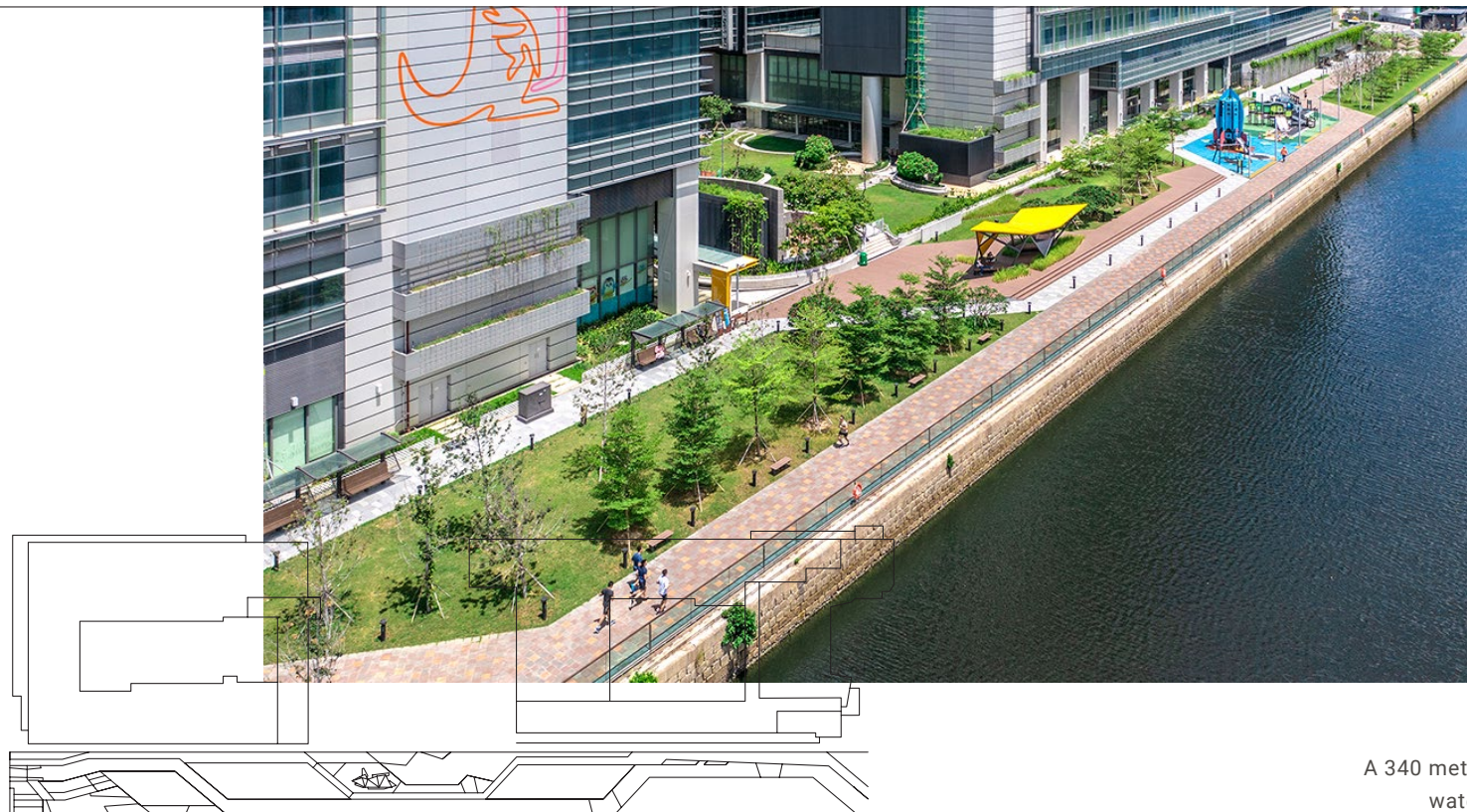


Lighting design infuses vibrancy at nighttime

PROJECTS WITH
COMMUNITY-FRIENDLY FEATURES

CASE STUDY

KAI TAK PROMENADE
(HONG KONG CHILDREN'S HOSPITAL SECTION)



A 340 meter continuous pedestrian
waterfront promenade

|| A DISTINGUISHED,
VIBRANT,
ATTRACTIVE AND
PEOPLE-
ORIENTED PUBLIC
LEISURE SPACE
BY VICTORIA
HABOUR ||



PROJECT TEAM

LOCATED AT THE SOUTHERN WATERFRONT OF THE HKCH IN KOWLOON BAY, THIS PROMENADE FORMS PART OF A PLANNED CONTINUOUS WATERFRONT PROMENADE EXTENDING FROM CHA KWO LING WATERFRONT TO MA TAU KOK WATERFRONT. IT IS 340 METRES LONG WITH A TOTAL AREA OF ABOUT 6,700 SQUARE METRES.

The completion of Kai Tak Promenade (Hong Kong Children's Hospital Section) has given birth to another popular place of attraction in the Kai Tak waterfront. The interaction between people and environment has successfully instilled vitality and vibrancy to the area.

With a large lawn adjacent to the sea, the promenade offers the public a brand new perspective to appreciate the scenic views of Victoria Harbour. There are recreation and leisure facilities along the promenade as well as plantations to appeal to children, families and visitors of all ages. Along the waterfront promenade, other features are available including a pedestrian walkway, a children playground, benches and rest area, as well as a building that provides ancillary services such as elderly-friendly toilets and a baby care room. To preserve the aviation culture of Kai Tai, various aviation-themed features and play facilities are incorporated to pay homage to the old Kai Tak Airport and create an unprecedented destination in Hong Kong.

ArchSD endeavours to promote and embrace sustainable living and outdoor active lifestyle to people in the community.

CASE STUDY
—
KAI TAK PROMENADE (HONG KONG CHILDREN'S HOSPITAL SECTION)



The Origami Airplane Pavilion is a tribute to the former Kai Tak Airport



Children playground area with aviation theme



Sheltered seating adjacent to the sea with lawns and trees



Landscaped area with resting benches

CASE STUDY
-
KAI TAK PROMENADE (HONG KONG CHILDREN'S HOSPITAL SECTION)



Featured installation using an old propeller from the Government Flying Service

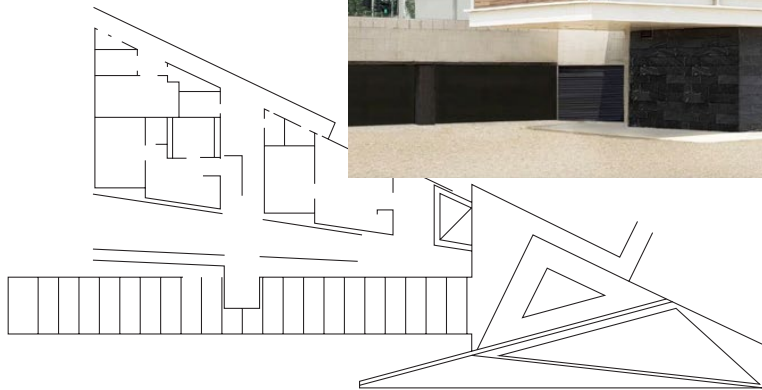


Service block with elderly-friendly toilets and baby care room

PROJECTS WITH
COMMUNITY-FRIENDLY FEATURES

CASE STUDY

TAI PO LUNG MEI BEACH BUILDING



The form of trellis roof echoes the ridgeline
of the Pat Sing Leng

II' INTEGRATING ARCHITECTURE WITH THE NATURE – LUNG MEI BEACH BATHHOUSE II

THE PROJECT IN LUNG MEI INCLUDES DEVELOPMENT OF A BEACH BUILDING, AIMING TO PROVIDE AN OBSERVATION DECK FOR VISITORS TO ENJOY THE STUNNING VIEWS OF THE LUNG MEI BEACH

Situating on the Lung Mei Beach as a new destination, the new beach building designed by ArchSD creates the connection between visitors and the nature.

The project includes the development of an observation deck and changing blocks. The observation deck is integrated with sun-shading shelters such that visitors could take a rest here and enjoy the sea breeze and sunset. Meanwhile, the changing blocks are also well equipped with changing rooms, shower facilities and washrooms for visitors.

The rippling roof of the observation deck, made with aluminium tubes, echoes the ridgeline of Pat Sin Leng in the background, while bamboo-moulded glassfibre reinforced cement panels were used for the external walls. An open and transparent design concept was applied when designing the building showcased by the triangular skylight in shower facilities which allows users to fully immerse in nature and enjoy the beautiful view of Pat Sin Leng.

CASE STUDY
-
TAI PO LUNG MEI BEACH BUILDING



The terracing building improves the connectivity between the access road and the beach



Observation deck for the enjoyment of sea breeze and sunset



Bamboo-moulded and glass fiber reinforced cement panels as external walls



Outdoor shower area

CASE STUDY
-
TAI PO LUNG MEI BEACH BUILDING



The permeability of building design for better enjoyment of the view

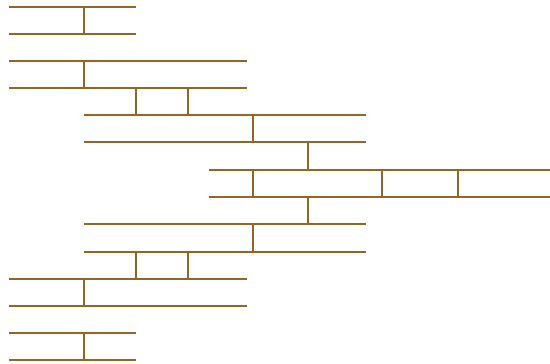
CREATING A CARING AND INCLUSIVE SOCIETY

GRI102-44

SUPPORTING THE UNSDGS



We encourage and mobilise our staff to participate in different volunteer services with care



We spare no effort in supporting community wellness through volunteering activities. To foster our colleagues' active participation, we have established a Volunteer Service Team to take part in volunteer services, such as redecorating homes for the elderly and visiting elderly homes.

Owing to COVID-19, and the need to maintain social distancing and staff safety, activities were significantly reduced in 2020. Nonetheless, we participated in 9 volunteer services, contributing a total of 219 hours of service to our community.

OUR COMMUNITY ENGAGEMENT AT A GLANCE

	2018	2019	2020
Total hours of staff volunteer service	1,044	1,128	219
Volunteers	58	46	37
Voluntary projects completed	21	16	9
Active Volunteer Service Team members ^[1]	14	19	0
Staff commended for voluntary service ^[2]	11	15	0

[1] Team members who contribute more than 20 hours of volunteering.

[2] Team members who contribute more than 30 hours of volunteering.

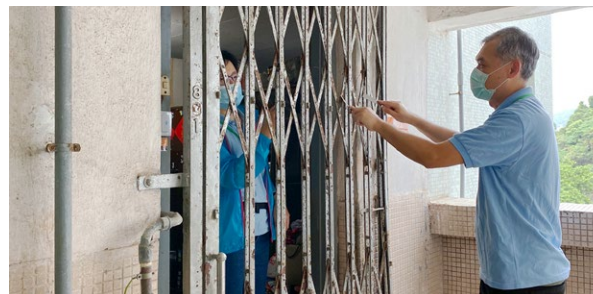
SNAPSHOT OF VOLUNTEER SERVICES IN 2020



Supporting a flag sale



Redecorating Homes of the Elderly



Visiting Elderly Homes
(Photos were taken in January 2020)