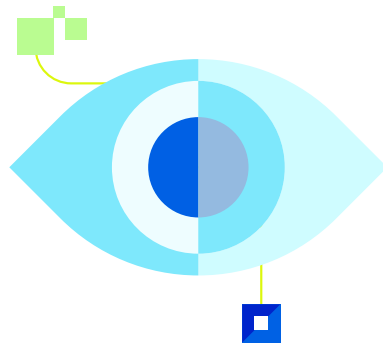


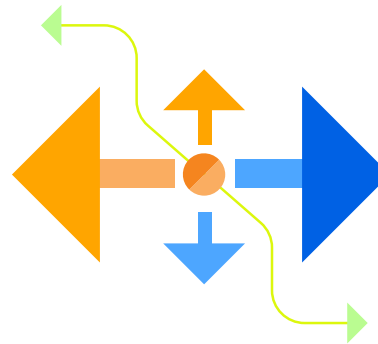
# ARCHSD AT A GLANCE

## Our Organisation and Roles



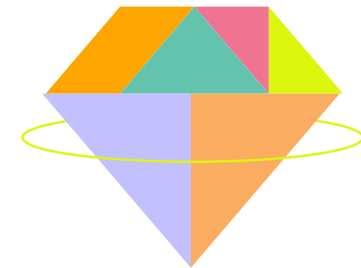
### VISION

- Serve the community
- Take care of the community
- Provide quality professional services
- Improve the quality of the living environment



### MISSION

- Ensure the quality, cost-effectiveness and sustainable development of community facilities
- Ensure the quality and cost-effectiveness in the upkeep of community facilities
- Provide quality professional advisory services on community facilities and related matters
- Promote best practices in the building industry



### VALUES

- Professionalism
- Commitment
- Accountability
- Integrity
- Versatility
- Continuous Improvement
- Team Spirit
- Partnering Spirit
- Caring Attitude

# ARCHSD AT A GLANCE

## Our Organisation and Roles

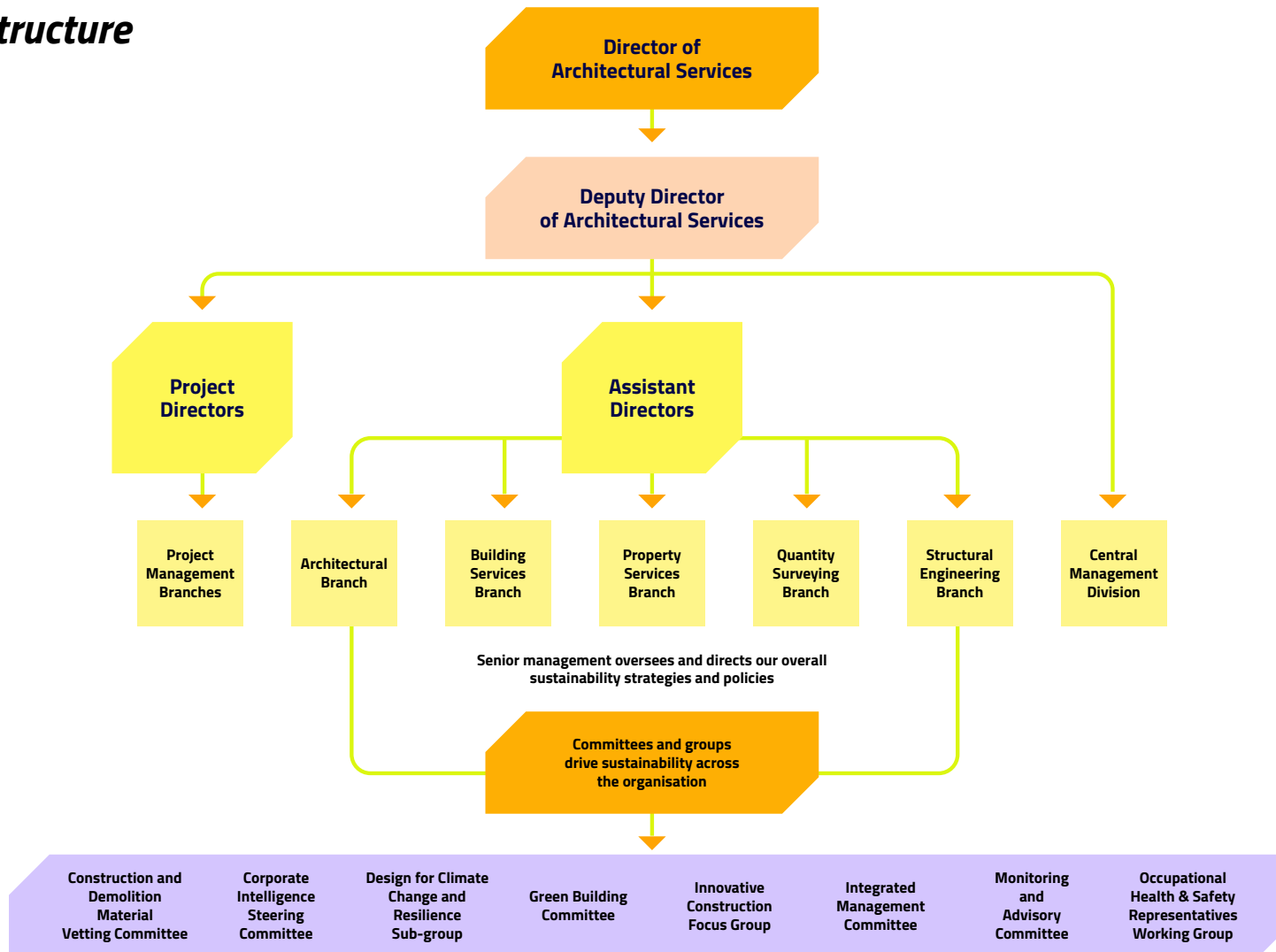
### *ArchSD's Role in the Government of the HKSAR*



# ARCHSD AT A GLANCE

## Our Organisation and Roles

### Organisation Structure



# ARCHSD AT A GLANCE

## Our Organisation and Roles

### *Management Team*



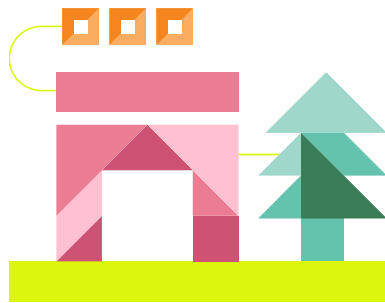
- Mr Michael LI, JP**  
Director of Architectural Services
- Mr Alan SIN**  
Deputy Director of Architectural Services
- Mr M. C. CHUNG**  
Assistant Director (Architectural)
- Mr M. Y. CHAN**  
Assistant Director (Building Services)
- Mr Raymond CHAN**  
Assistant Director (Property Services)
- Ms Katherine LEUNG**  
Assistant Director (Quantity Surveying)
- Mr C. Y. KAN**  
Assistant Director (Structural Engineering)
- Ms Winnie CHONG**  
Departmental Secretary
- Ms Athena FUNG**  
Project Director/1
- Mr Edward WONG**  
Project Director/2
- Ms Lilian CHEUNG**  
Project Director/3
- Mr Ben YEUNG**  
Project Director/4

# ARCHSD AT A GLANCE

## Our Organisation and Roles

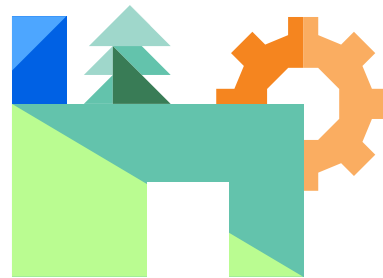
### *Core Functions*

The ArchSD performs three core functions for Government-owned and Government-funded facilities:



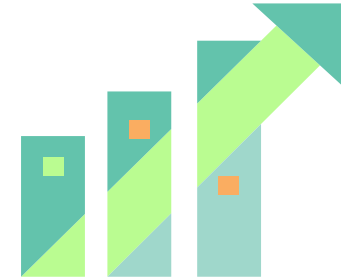
#### **Monitoring and Advisory Services**

Providing effective professional and technical advice to the Government and quasi-government organisations and to oversee subvented and entrusted projects.



#### **Facilities Upkeep**

Providing efficient and cost-effective professional and project management services for the maintenance and refurbishment of buildings and facilities.



#### **Facilities Development**

Providing efficient, cost-effective and timely architectural and associated professional and project management services for the design and construction of buildings and related facilities.

# ARCHSD AT A GLANCE

## Key Facts of the Department

### Our Services and Contributions

Number of Subvented/Entrusted  
Projects Reviewed

**639**

Number of Facilities Development  
Projects Completed

**34**

Number of New Jobs  
Created

**9 195**

New Works and Term  
Contracts Commenced

**19**

Government Spending on  
Building Projects

HK\$ **28,207.80** million

Value of New Works  
Development

HK\$ **337.96** billion

Building Floor Area of  
Properties Maintained

**34 110 000** m<sup>2</sup>

#### Establishment Date

**11 April 1986**

#### Headquarters

Queensway Government Offices,  
66 Queensway, Hong Kong

#### Other Offices

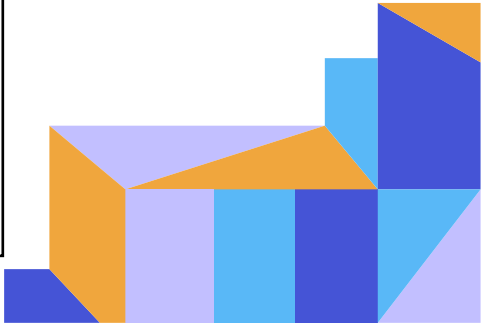
APB Centre, Hunghom, Kowloon  
Cityplaza 3, 14 Taikoo Wan Road, Quarry Bay, Hong Kong  
Immigration Tower, 7 Gloucester Road, Wan Chai, Hong Kong  
Rumsey Street Multi-storey Carpark, 2 Rumsey Street,  
Sheung Wan, Hong Kong  
Wanchai Tower, 12 Harbour Road, Wan Chai, Hong Kong  
Other premises (employed by the ArchSD in delivering  
public services)

#### Staff Establishment

**2 008** employees  
(As at 31 March 2025)

#### Total Office Area

**42 501.64** m<sup>2</sup>





# ARCHSD AT A GLANCE

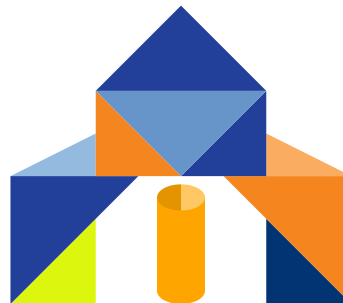
## ■ Departmental Funding and Expenditure

### *Funding*

Our departmental operation is funded by



the Capital Works Reserve Fund, which is approved, monitored and reviewed by the Legislative Council



the Lotteries Fund, which is approved by the Director of Social Welfare



the Anti-epidemic Fund, which was launched by the Government in 2020

# ARCHSD AT A GLANCE

## Departmental Funding and Expenditure

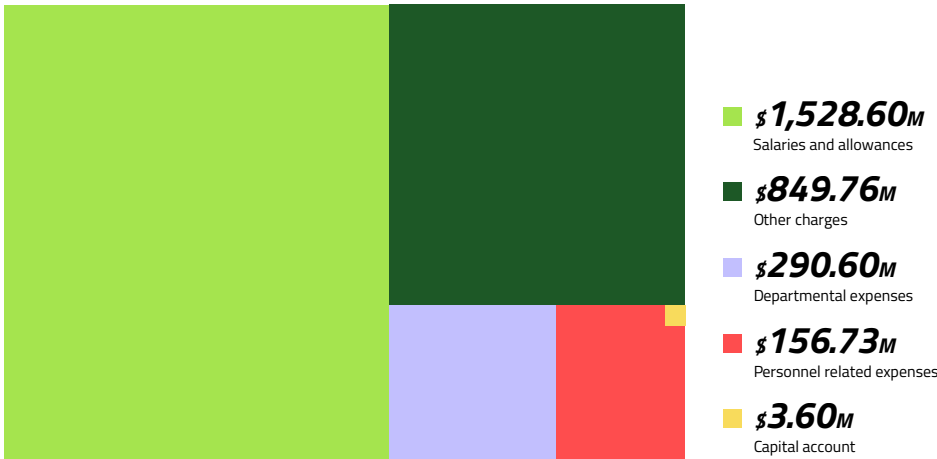
### Expenditure

In the financial year 2024-25, departmental expenditure increased by 4.51% as compared with the previous financial year. A breakdown of our Department and programme areas for 2024-25 is listed below.

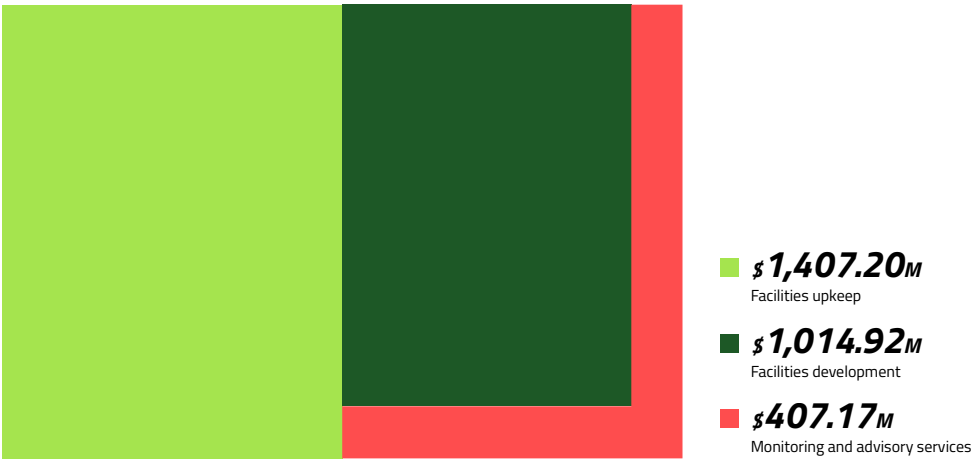
Financial information and key performance details can be found in the ArchSD Controlling Officer's Report of the 2025-26 Estimates of the Government of the HKSAR, which is available at [www.budget.gov.hk](http://www.budget.gov.hk).

**Actual Departmental Expenditure: \$2,829.29M**  
(4.51% increase as compared with last financial year)

By Category (Total: \$2,829.29M)



By Programme (Total: \$2,829.29M)



[1] The actual Departmental Expenditure for 2024-25 was HK\$2,829.29 million. This represented a 4.51% increase as compared with the actual Departmental Expenditure for 2023-24 of HK\$2,707.19 million.

[2] There are three programme areas of ArchSD's services: Monitoring and advisory services, Facilities upkeep and Facilities development.