

Recycling Machine

Put in



2. Touch Screen



1. Code Screening



3. Get Coupon



4. Recycling



Compress and Recycling



There are 2 types of plastic bottle recycling machines onsite. Workers not only can learn the ideas of environmental protection, but also increase the awareness of carbon reduction and environment protection through the machines.



LIMITED RESOURCES

UNLIMITED RECYCLING !

Green Office



Organic Farm



Green Roof



Skylight



Vegetable Garden



Second hand furniture



Fruit Garden



Car park



Vertical Planting



Bamboo curtain



To increase the environmental awareness of the workers, we use the third-hand construction material to build up an Organic Farm and Green Office. All workers are invited to manage these green facilities.

Fish-Plant Ecosystem

1. Water Pump

2. PVC Filter

3. Activated Carbon Filter

4. Fishpond

魚菜共生

魚菜共生—指把魚的糞便和水中的細菌分解成營養過濾，主要氮（尿素）成份，再供應給魚缸上的蔬菜，同時蔬菜的根都會把池內的水淨化，重新供給魚使用，結合水產養殖與水耕栽培的互利共生生態系統。在一個魚菜共生系統中，來自一個水產養殖系統的水被輸送到水菜系統，其中副產物是由固氮細菌分解成硝酸鹽和亞硝酸鹽，它們由植物用作為營養物，水然後再循環回到水產養殖系統。

在魚池中基礎性的植物，含有氮、磷等成分，若直接排到地盤會讓土壤造成環境的負擔，不過若拿這些廢水來種菜，反而提供蔬菜養分，而且蔬菜淨化水質後，又可以導回魚池再利用。

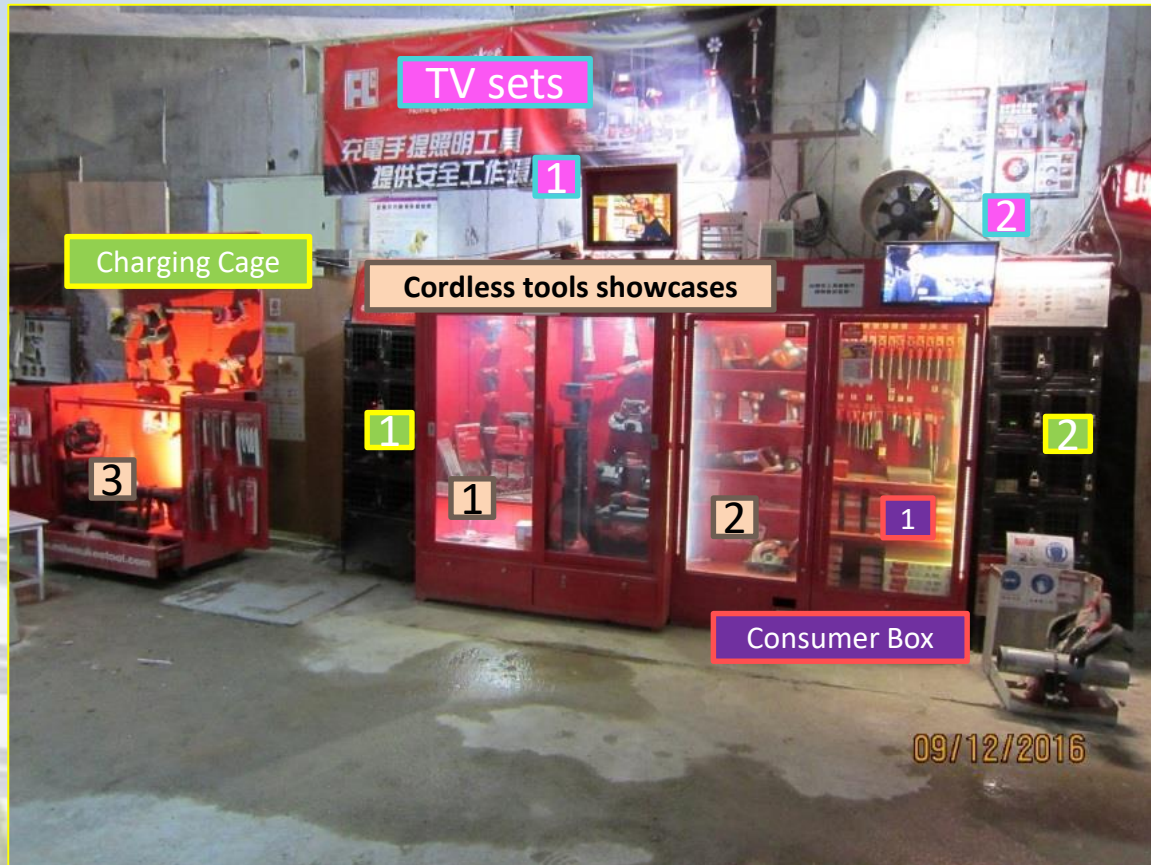
這一套平衡系統，能避免水質惡化，且形成魚菜、菜幫魚的良性循環。



A fish-plant Ecosystem is designed and made by the waste materials onsite. The success of this ecosystem can act as a good demonstration to all of the workers and encourage them try to make good use of the waste materials, ultimately, protect our nature.

Cordless Construction site

In order to successfully attract and encourage subcontractors and workers to use wireless power tools, 30 types of more than 60 units of wireless tools are provided on site for the worker to borrow. In addition, the related facilities including the central charger, accessories selling boxes, promoting televisions and posters are provided to borrow free of charge.



Cordless Construction site



Cable Free



Spark Free



Dust Free



Cordless Construction site



The site provides 18 types of wireless portable lights which are wireless, 360 degree adjustment, waterproof, anti-collision and magnetic holding. All of the above technical features can be applied to any working environment on the site.



Ceiling works



Lift shaft works



Formwork works



BS installations

Transformer Welding Trolley



Transformer welding trolley is designed and made by the construction waste and used materials. It brings advantages to the worker:

- 1) Reduce the manual handling hazard
- 2) Can be used as shading during welding
- 3) Reduce the risk of inhaling the toxic gases



1st Generation



2nd Generation



3rd Generation

Blower

Fire Extinguisher

Safety Signage

Protective Screen

Concrete Collector

Easily install by using simple tool.

Joint filler is placed inside the funnel concrete collector to reduce the noise during collision of concrete debris

It connects with the rubber tubing and transfers the concrete debris to the next layer floor

Can adjust the width which can fits to different size of floor edge

Concrete breaking often occur on site. To prevent the concrete debris falls from height and harms to the worker, we designed a concrete collector. It also helps to separate the concrete debris from the construction waste.



Assembled

Installed

Concrete Breaking

Through channel to designated area

Collected and Separated