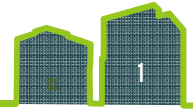


Resources Management - Banner Up-Cycling



↑↑↑
Banner Up-cycling = 50%
Banner Reuse on-site = 50%



Partnership with
CG Concept



Energy Management - Temp. Transformer Room



Use of Temp. Transformer

Reduction in:

- Air Pollution
- Noise Pollution
- Chance of Chemical Spillage

Electricity Pole for Better Temp. Electricity Wiring



- ❖ Self-initiated
- ❖ Well-planned

Total CO_{2e} Reduction
⇒ ↓52% /
⇒ ↓1,700,000kg

Keys: - *No Generators on-site are used by HHJV

Contract No.: SSC502 Design and Construction of West Kowloon Government Offices in Yau Ma Tei

Energy Management - Solar Energy Charging Station



Harvest Solar Energy

- ❖ Use of Renewable Energy
- ❖ Total 11 Charging Ports
(6 Android + 5 Apple)
- ❖ Caring for Workers

太陽能充電站

Solar Energy Charging Station

歡迎工友使用「WE CARE 2.0 太陽能手機充電站」，但使用前請注意以下數點：

1. 本區僅提供充電服務，不負保管責任
2. 不可擅自取走或破壞電線或充電器
3. 任何時候都應小心保管個人財物
4. 請勿在手機充電時使用手機，以避免安全隱患
5. 不可為Samsung Note 7或任何非電話裝置充電

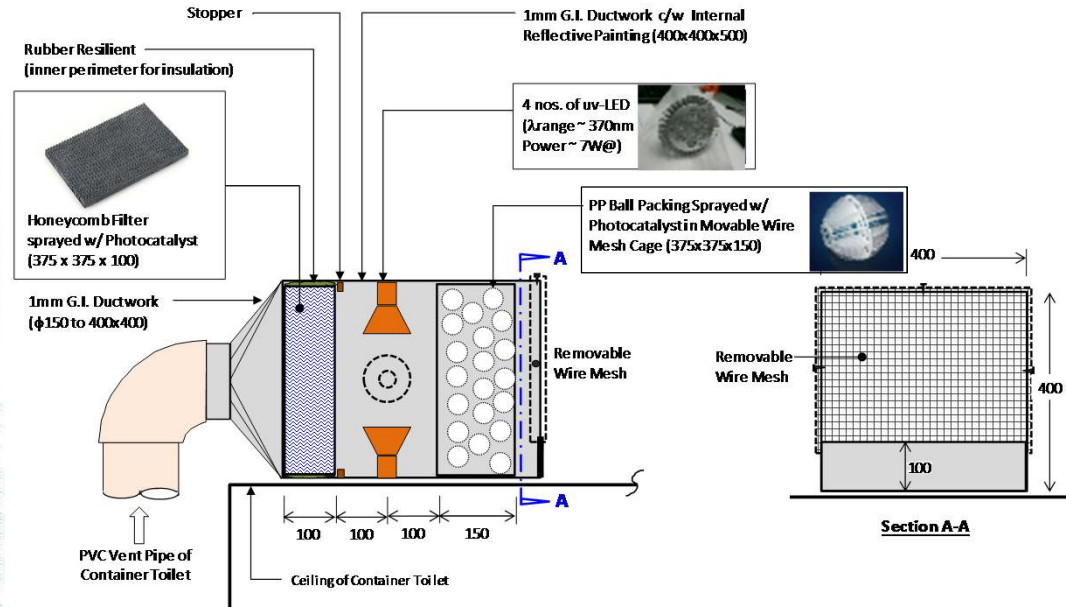
SAFETY ENV.

Improvement in Air Quality



NH₃ Removal Efficiency

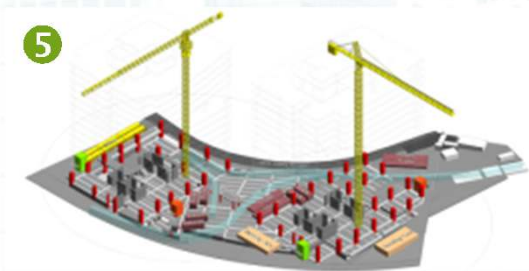
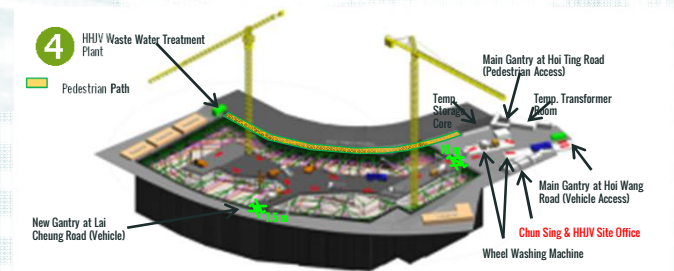
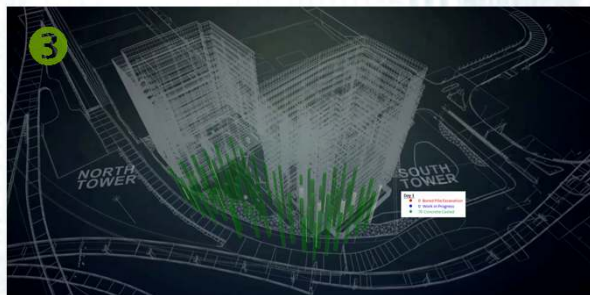
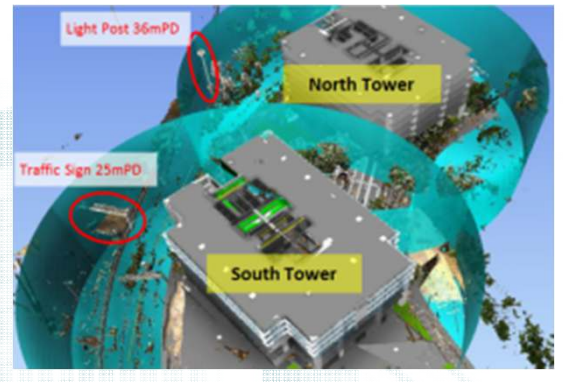
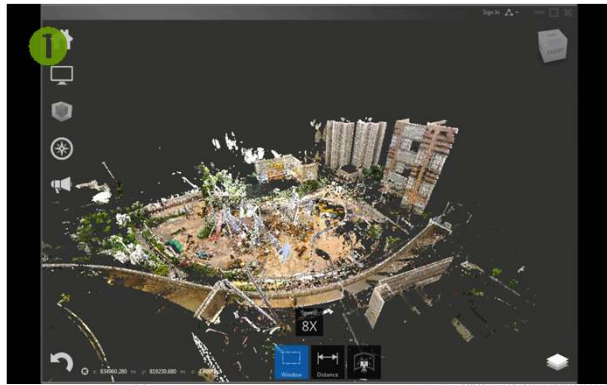
= ↓ 97%



Toilets Photocatalyst Deodorizer



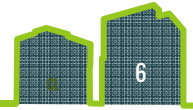
Building Information Modelling (BIM)



Logistics Planning during substructure construction

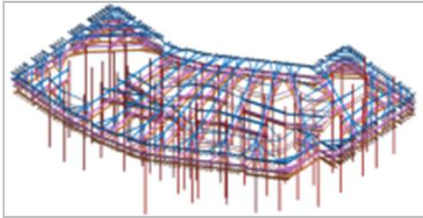
- 1 Use 3D Laser Scanning
- 2 Tower Crane Working Radius Simulation
- 3 Site Progress Monitoring
- 4 Logistics planning with 4D BIM
- 5 Swept path analysis

Building Information Modelling (BIM)

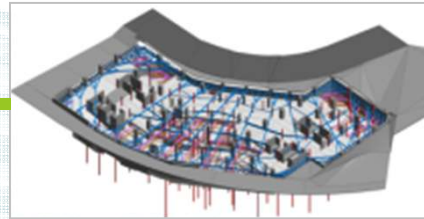


ELM Study

Create ELM Model



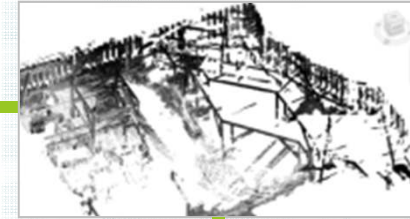
Clash detection based on ELM and basement Model



Construct ELM on site



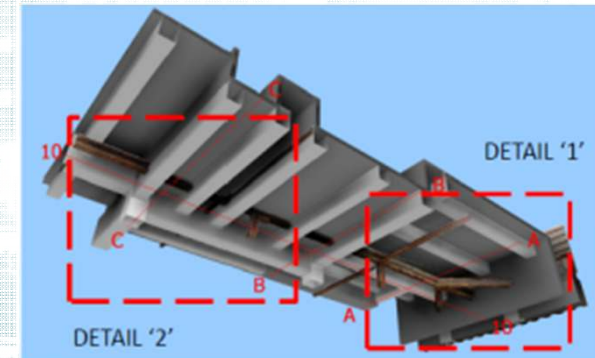
ELM Scanning Model



Create Basement Model

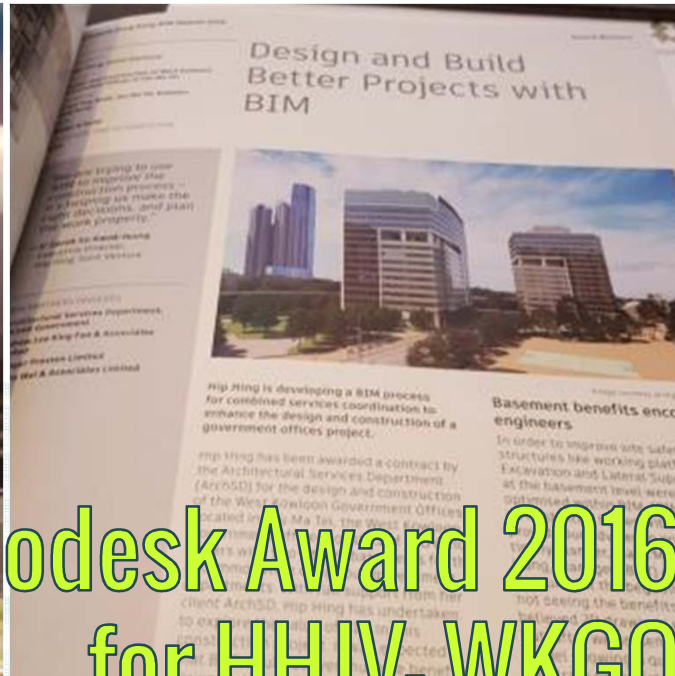


Clash detection based on ELM scanning model and basement BIM model



- ✓ Reduced Clashes on site
- ✓ Reduced reworks

Use of BIM - Integrated Design



Autodesk Award 2016 for HHJV- WKGO

Building Information Modelling (BIM)

- ❖ Reduce C&D wastes and resource consumption
- ❖ Minimize the amendment of building by integrated design

