

# Quieter Construction Method



- ▶ Use of Hydraulic Crusher for demolition
- ▶ Greatly reduce noise and air nuisances

# Noise Enclosure & Acoustic Screen



Noise enclosure used for piling work , able to reduce 15 dB(A)  
(Measured by certified lab)



Acoustic screen erect at site boundary



# Use of Dust Screen



Cover the whole building using 2 layers of impervious tarpaulin before demolition

# 180° Automatic Sprinkler



- ▶ Keep the main haul road wet all the time
- ▶ Dust suppression

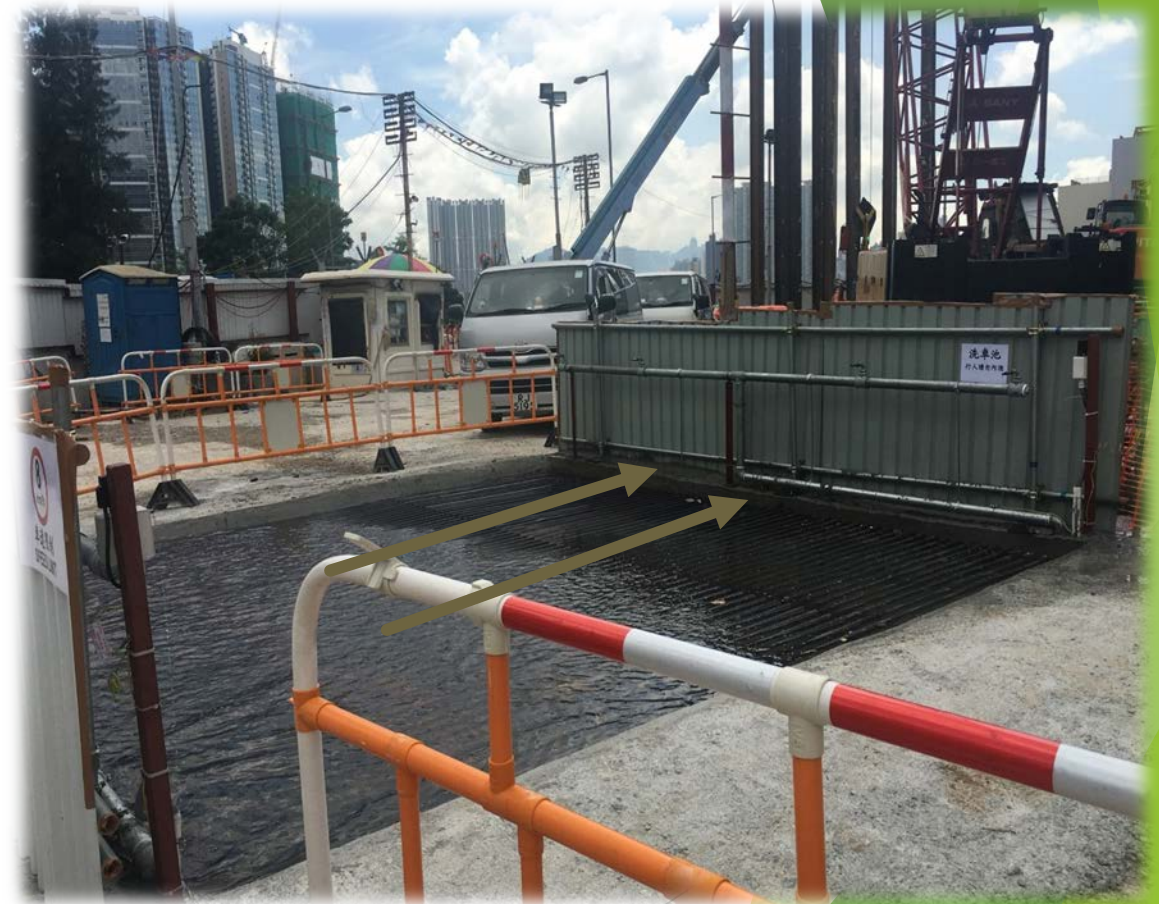


# Light Indicator



- ▶ Light Indicator for generator running
- ▶ Ensure generators were switched off after work, nighttime control
- ▶ Prevent from wasting energy

# Use of Recycled Water



Use of recycled the wastewater for wheel washing



# Set up 24-hour Communication Channel



**HSE 中區 CHONG Build King**

項目名稱：設計興建綠怡邨商場 105 號九龍總匯樓頂及行動地盤中環內分區警署大樓

頁的編號：SS CS03

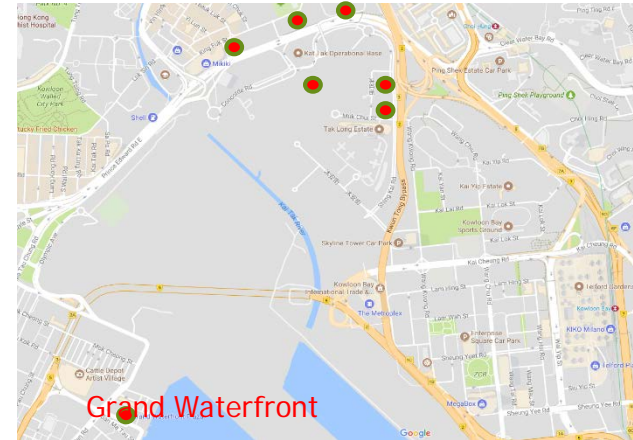
**簡介**  
 新區 - 利基發展於二零一六年七月成功獲批九龍總匯樓頂及行動地盤中環內分區警署的建造工程合約。工程計劃的範圍包括拆卸現有的地盤行動地盤及於該地盤興建地盤建築一座約六層、佔地約九萬餘呎的商場。舉凡進行動地盤、中環內分區警署、總匯警署樓頂及屋頂的配電。預計於二零一九年下半年完工。

**打樁工程**  
 打樁工程已於二零一七年一月下旬正式展開。預計工程將耗約八個月。並將會於今年第三季內結束。為其他工程開始提供空間。我們此工程開始前，已做好各項地盤測試及評估。我們會致力於工地實施所有的環境管理系統，使用優質機械和採取各項保護及減低環境影響。包括利用隔音物料對打樁機使用低噪音的機械設備，並保持工地周圍環境整潔。此外，我們會定期進行調查，確保及改善系統，以確保工程不會對附近居民造成滋擾。

**查詢**  
 如對本工務內閣有任何查詢，可親臨以下相關人員聯絡：

職銜	姓名	電話號碼
總辦	羅先生	5948 6308
專員	林先生	9168 0616
其他查詢	李先生	9843 5266

如欲一觀查詢，可電郵至 [40429@hkg.com.hk](mailto:40429@hkg.com.hk)



- ▶ Nominate Public liaison officer
- ▶ Actively contact residents prior to the commencement of works
- ▶ Set up hotline for better communication with stakeholders
- ▶ Response to enquiry promptly e.g. vibration case



- ▶ Arrange presentation actively with concerned parties for rental land
- ▶ Build temporary transformer room at rental land to minimize use of generators
- ▶ Hard paved rental land
- ▶ Set up an additional dust monitoring station to measure PM10 and PM2.5

# Energy Resource Management



sensor  
→



Use of LED floodlight with timer setting

- ▶ Reduce electricity consumption (300W to conventional 400W, ~ 3A)
- ▶ Timer setting difference from winter & summer

▶ Use of LED lighting with internal sensor

▶ 18W only comparing to conventional T5 tube (28W)



# Use of Temporary Transformer



- ▶ Land renting for erection of temporary transformer
- ▶ No generator will be used on site after temporary transformer ready
- ▶ Capacity: 1600Amp
- ▶ Use less fuel & reduce smoke emission